

Date : 20/03/2022

Time : 2.30 Hrs.

Marks : Section-A = 30 + Section-B = 320 = 350

Important Instructions :

1. Immediately fill the particulars on this page of the Test Booklet as well as Answersheet with Black or Blue Ball Pen. *Use of pencil is strictly prohibited.*
2. Do not open this Test Booklet until you are asked to do so.
3. This Test Booklet contains of 110 questions.
4. There are two sections in the question paper i.e. **Section-A** and **Section-B**.
5. The **Section-A** contains three parts i.e. Part-I, Part-II and Part-III.
6. The **Part-I** contains 10 questions of **English**.
7. The **Part-II** contains 10 questions of **Mental Ability**.
8. The **Part-III** contains 10 questions of **Basic Mathematics**.
9. In **Section-A**, each question carries **ONE** mark. There is no negative marking system.
10. The **Section-B** contains **THREE** parts i.e. Part-I, Part-II and Part-III.
11. The **Part-I** contains 20 questions of **Physics**.
12. The **Part-II** contains 20 questions of **Chemistry**.
13. The **Part-III** contains 40 questions of **Biology**.
14. In the **Section-B**, each question carries 4 marks. There is negative marking system. For each wrong answer 1 mark will be deducted.
15. There are four choices for every question, out of which only one choice is most correct.
16. Filling up more than one responses in any question will be treated as wrong response and marks for this will be deducted according to negative system.
17. No candidate is allowed to carry any printed or written textual material, bits of papers, cell phone and any other electronic devices.
18. Rough work is to be done on the space provided in the Test Booklet only.
19. On completion of the test, the candidate must hand over the Answer Sheet to the Invigilator on duty. *However, candidates are allowed to take away this Question Paper with them.*
20. Do not fold or make any stray marks on the Answer Sheet.

Name of the Candidate (in Capital letters) : _____

Seat No : In figures

--	--	--	--	--	--	--	--

Section - A : (Part-I - English)

Instruction :

Select from the answer choices given under the sentence to form grammatically correct sentence :

01. Neither the salesman nor the marketing manager of the system.

- | | |
|------------------|-------------------|
| 1) is favouring | 2) is in favour |
| 3) are in favour | 4) are for favour |

Instruction :

Identify the part that contains an error.

02. These days (A) / news are (B) / travelling (C) / faster than (D) / before.

- | | |
|------|------|
| 1) A | 2) B |
| 3) C | 4) D |

Instruction :

Choose the one which best replaces the underlined words.

03. My father is suffering from diabetes, for the past three years.

- | | |
|-----------------|-----------------------|
| 1) is suffer | 2) has been suffering |
| 3) has suffered | 4) no change |

Instruction :

Find the word that conveys the same meaning.

04. APPLAUD.

- | | |
|-----------|------------|
| 1) rebuke | 2) slam |
| 3) praise | 4) condemn |

Instruction :

Select the word that is opposite in meaning.

05. BENIGN.

- | | |
|------------|---------|
| 1) sick | 2) poor |
| 3) damaged | 4) evil |

Instruction :

Select the pair of words to replace the question mark.

06. Sonnet : Line :: ? : ? .

- | | |
|--------------------|--------------------|
| 1) Ballad : Poetry | 2) Novel : Chapter |
| 3) Epic : Ode | 4) Game : Score |

Instruction :

Choose the one that can be substituted for the given phrase :

07. A fool's Paradise means :

- | | |
|---------------------------------------|----------------------|
| 1) a foolish idea | 2) an imaginary idea |
| 3) an unexpected gain for foolish man | 4) false hopes |

Instruction :

Find out the correct meaning of the Idiomatic expression :

08. Token strike :

- | | |
|---------------------------------|-----------------------------|
| 1) total strike | 2) carefully planned strike |
| 3) short strike held as warning | 4) sudden call of strike |

Instruction :

09. Choose the correctly spelt word :

- | | |
|--------------|-------------|
| 1) Humorous | 2) Homorous |
| 3) Humourous | 4) Humorous |

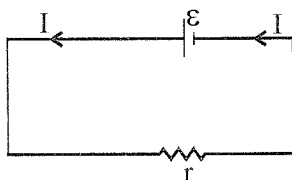
Instruction :

Choose the correct alternative out of the four choices to complete the sentence.

10. I wonder if they will change _____ plans.

- | | |
|----------|------------|
| 1) there | 2) they're |
| 3) their | 4) theirs |

39. The electromotive force of a cell is 24 V, if its negative plate is of -24 volt, the voltage of the positive plate can be
- 1) zero
 - 2) 24 volt
 - 3) 12 volt
 - 4) can't say
40. In an electric circuit with a cell of emf ' ϵ ' and resistance ' r ', the current strength is ' I ', then, at any cross-section of the conductor, in unit time.

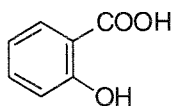


- 1) $\frac{\epsilon}{r}$ amount of positive charge goes in the direction of current
 - 2) $\frac{\epsilon}{r}$ amount of charge goes in all directions at a given cross-section
 - 3) $\frac{\epsilon}{r}$ amount of negative charge goes opposite to the direction of current
 - 4) all the above
41. Gravitational force is
- 1) Real force
 - 2) Pseudo force
 - 3) Imaginary force
 - 4) None of these
42. The minimum velocity with which an object of mass 1 kg must be projected so that it will escapes from the influence of earth's gravittional field is
- 1) 11.2 m/s
 - 2) 11.2 km/h
 - 3) 11.2 km/min
 - 4) 11.2 km/s
43. A 100 W electric bulb is used for 5 hours every day. How much electricity does it consume in a week ?
- 1) 0.35 kwh
 - 2) 3.5 kwh
 - 3) 35 kwh
 - 4) 3500 kwh
44. Swara takes 10 s to carry a bag weighing 10 kg to a height of 10 m. How much power has she used
- 1) 98 watt
 - 2) 100 watt
 - 3) 10 watt
 - 4) none of these
45. The working of a rocket depends on Newton's law of motion
- 1) First
 - 2) Second
 - 3) Third
 - 4) None of these

Space for Rough Work

51. What is the harmful effect of the depletion of Earth's ozone layer?
- 1) Average temperature of earth's surface will decrease gradually.
 - 2) The oxygen content of atmosphere will increase.
 - 3) Increased amount of ultraviolet radiation will reach on earth's surface.
 - 4) None of these
52. Who discovered electrons?
- 1) E. Goldstein
 - 2) J. J. Thomson
 - 3) Rutherford
 - 4) James Chadwick
53. The density of nitrogen gas is maximum at
- 1) STP
 - 2) 273K and 1 atm
 - 3) 546 K and 2 atm
 - 4) 546 K and 4 atm
54. Which one of the following is the poorest conductor of electricity?
- 1) Copper
 - 2) Aluminium
 - 3) Lead
 - 4) Silver

55. How many sigma (σ) and pi (π) bonds are present in salicylic acid ?



- 1) $10\sigma, 4\pi$
 - 2) $16\sigma, 4\pi$
 - 3) $16\sigma, 16\pi$
 - 4) $18\sigma, 2\pi$
56. Which of the following molecule contains all ionic, covalent and coordinate bonds ?
- 1) H_2O
 - 2) Cl_2
 - 3) H_2SO_4
 - 4) NH_4Cl
57. Which of the following is Boyle's law ?
- 1) Temperature is constant, Volume –Number of moles relationship
 - 2) Pressure is constant, Volume –Temperature relationship
 - 3) Volume is constant, Temperature – Pressure relationship
 - 4) Temperature is constant , Pressure – Volume relationship
58. The average molecular mass of a sample containing 5 moles of O_2 and 5 moles of N_2 is
- 1) 32
 - 2) 28
 - 3) 30
 - 4) 7.5
59. A solution which gives pink colour with phenolphthalein. It's p^H is likely to be
- 1) 2
 - 2) 5
 - 3) 12
 - 4) 7

Space for Rough Work

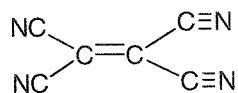
60. The general formula of alkynes is
- 1) C_nH_{2n+2}
 - 2) C_nH_{2n+1}
 - 3) C_nH_{2n-2}
 - 4) C_nH_{2n-1}
61. Which of the following is the ionic part of soap?
- 1) COO^-Na^+
 - 2) $SO_3^-Na^+$
 - 3) $OSO_3^-Na^+$
 - 4) None of these
62. The ionic radius (in Å) of N^{3-} , O^{2-} and F^- are respectively
- 1) 1.71, 1.40 and 1.36
 - 2) 1.71, 1.36 and 1.40
 - 3) 1.36, 1.40 and 1.71
 - 4) 1.36, 1.71 and 1.40
63. Anhydrous ferrous sulphate salt on heating gives
- 1) SO_2 and SO_3
 - 2) SO_2 only
 - 3) SO_3 only
 - 4) S only
64. In the extraction of Aluminium, the function of cryolite is to
- 1) lower the melting point of alumina
 - 2) increase the melting point of alumina
 - 3) remove the impurities from alumina
 - 4) decreases the conductivity of alumina
65. 2 ml of acetic acid was taken in each of test tubes A, B and C and 2 ml, 4 ml, 6 ml of water was added respectively to them. A clear solution is obtained in
- 1) test tube A
 - 2) test tube B
 - 3) test tube C
 - 4) all the test tubes
66. Which of the following metal reacts fastest with ethanol ?
- 1) Aluminium
 - 2) Sodium
 - 3) Magnesium
 - 4) Calcium
67. IUPAC name of higher homologue of $CH_3(CH_2)_2 OH$ is
- 1) Propan-1-ol
 - 2) Hexan-1-ol
 - 3) Butan-1-ol
 - 4) Pentan-1-ol
68. Which of the following will undergo addition reaction ?
- 1) Ethane
 - 2) Ethene
 - 3) Propane
 - 4) Butane

Space for Rough Work

69. Propane + $\text{Cl}_2 \xrightarrow{\text{sunlight}}$ (A) + (B); (A) and (B) are

- 1) chloroethane and chloromethane
- 2) 1-chloropropane and chloroethane
- 3) 2-chloropropane and chloromethane
- 4) 2-chloropropane and 1-chloropropane

70. Total number of sigma (σ) and pi (π) bonds are present in the given compound



- | | |
|--------------------|--------------------|
| 1) $9\sigma, 9\pi$ | 2) $6\sigma, 9\pi$ |
| 3) $9\sigma, 6\pi$ | 4) $6\sigma, 6\pi$ |

Space for Rough Work

71. Following are the characters of monocot plants
- Seeds contain only one cotyledon in the embryo
 - Leaves are isobilateral, with parallel venation
 - Fibrous root system is present
 - Presence of trimerous flowers
- a and b are correct
 - b, c and d are correct
 - a, b, c and d are correct
 - a, b, c and d are incorrect
72. From the following list how many organisms are belongs to kingdom Monera ?

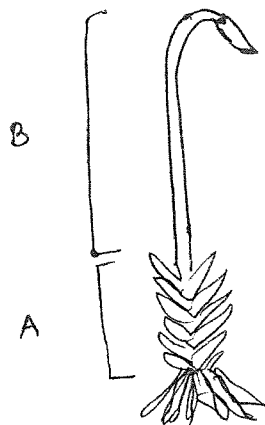
Euglena, Volvox, Amoeba, Paramecium, Staphylococcus, Clostridium, Salmonella, Aspergillus, Penicillium

- Nine
 - Five
 - Three
 - Two
73. Translocation of food in the plant body takes place by phloem is
- Upward direction only
 - Downward direction only
 - Bidirectional
 - Either upward or downward direction
74. Match the column-I with column-II

Column-I	Column-II
A) Stomata	a) Impervious to gases
B) Root hair	b) Exchange of gases
C) Suberin layer	c) Transportation of food
D) Phloem	d) Water absorption

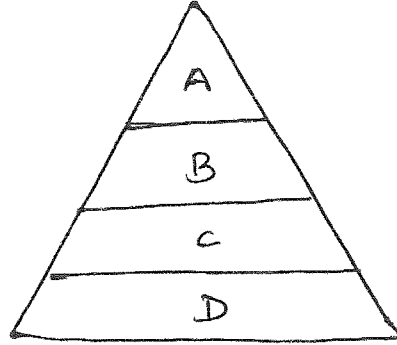
- A – b, B – d, C – c, D – a
 - A – b, B – a, C – d, D – c
 - A – b, B – d, C – a, D – c
 - A – c, B – d, C – b, D – a
75. If a bacterial cell divides every 20 min. Then how much time required to formation 8 bacterial cells
- 20 min.
 - 40 min.
 - 1 hr.
 - 2 hr.
76. Find out the **True** or **False** statement from the following.
- A** – Environmental triggers such as light or gravity will change the directions of that plant parts.
- B** – In plant, stem grows towards the light while roots grows away from the light.
- A – True, B – True
 - A – True, B – False
 - A – False, B – True
 - A – False, B – False
77. If 12 molecules of NADH_2 enter into electron transfer chain then number of ATP molecules generated through ETS of mitochondria is/are
- 3 ATP
 - 24 ATP
 - 36 ATP
 - 48 ATP

78. Labelled A and B in the following diagram of funaria.



- 1) A – Gametophyte, B – Gametophyte
 - 2) A – Sporophyte, B – Sporophyte
 - 3) A – Gametophyte, B – Sporophyte
 - 4) A – Sporophyte, B – Gametophyte
79. **Assertion** : Cytokinesis in animal cells takes place by the formation of clean furrow.
Reason : Cytokinesis in plant cells takes place by the formation of cells plate.
- 1) Both assertion and reason are correct statement, reason is correct explanation of assertion
 - 2) Both assertion and reason are correct statement, reason is not correct explanation of assertion
 - 3) Assertion is incorrect but reason is correct
 - 4) Both are incorrect statement
80. Respiration takes place in absence of molecular oxygen is _____
- 1) Aerobic
 - 2) Anaerobic
 - 3) Aerobic and Anaerobic
 - 4) Fermentation and aerobic
81. Colour blindness is example of
- 1) Dominant Y – linked disease
 - 2) Recessive X – linked disease
 - 3) Dominant X – linked disease
 - 4) Recessive Y – linked disease
82. Find out the numbers of correct statement from the following.
- A) Production of various useful aquatic organisms with the help of water is called as green revolution
 - B) Grasses like alfalfa, clover and rye are used in phytoremediation
 - C) Organic manure and chemical fertilizer are types of fertilizer
- 1) One
 - 2) Two
 - 3) Three
 - 4) All
83. Important method used in animal husbandary is/are
- 1) Artificial insemination
 - 2) Embryo transfer
 - 3) Both '1' and '2'
 - 4) Neither '1' nor '2'

89. Important process of the nitrogen cycle is
- 1) Nitrogen fixation
 - 2) Ammonification
 - 3) Nitrification
 - 4) More than one option is correct
90. Identify A, B, C and D. In the given trophic levels



- | | A | B | C | D |
|----|------------|------------|------------|------------|
| 1) | Producers | Herbivores | Carnivores | Omnivores |
| 2) | Carnivores | Omnivores | Producers | Herbivores |
| 3) | Herbivores | Producers | Omnivores | Carnivores |
| 4) | Omnivores | Carnivores | Herbivores | Producers |

91. Peripates is connecting link between phylum Annelida and arthropoda. The characters related to phylum are given below. Find out the correct match of phylum and characters.

Phylum	Characters
A) Annelida	I) Segmented body
B) Arthropoda	II) Parapodia
	III) Tracheal respiration
	IV) Open circulatory system
	V) Chitinous exoskeleton

- 1) A – I, II, V, B – III, IV
 - 2) A – I, II, B – III, V
 - 3) A – II, IV, B – I, III
 - 4) A – I, III, B – II, IV
92. **Assertion** : Tendon is white fibrous connective tissue and connect muscles to bone.
Reason : Tendon is made up of elastic tough collagen protein fiber.
- 1) Both assertion and reason are correct statement, reason is correct explanation of assertion
 - 2) Both assertion and reason are correct statement, reason is not correct explanation of assertion
 - 3) Assertion is correct but reason is not correct
 - 4) Both are incorrect statement
93. The correct sequence of human journey during evolution is
- 1) Ramapithecus → Australopithecus → Homo habilus → Homo erectus → Neanderthal man → Cro-magnon man
 - 2) Australopithecus → Ramapithecus → Homo habilus → Cro-magnon man → Australopithecus
 - 3) Neanderthal man → Ramapithecus → Homo habilus → Cro-magnon man → Australopithecus
 - 4) Homo erectus → Homo habilus → Cro-magnon man → Neanderthal man → Ramapithecus → Australopithecus

94. Match column – I with column – II

Column – I	Column – II
P) Nucleus	i) Photosynthesis
Q) Chloroplast	ii) Chromosome
R) Lysosome	iii) Power house of cell
S) Golgibody	iv) Suicidal bag
T) Mitochondria	v) Packaging of material
1) P – i, Q – ii, R – iii, S – iv, T – v	2) P – ii, Q – i, R – iv, S – v, T – iii
3) P – iii, Q – ii, R – iv, S – i, T – v	4) P – v, Q – iv, R – iii, S – i, T – ii

95. **Assertion** : Acquired immunity is developed by an animals response to a disease caused by infection of microbes**Reason** : Animals own cells produce antibodies in response to infection by active immunity

- 1) Both assertion and reason are correct statement, reason is correct explanation of assertion.
- 2) Both assertion and reason are correct statement, reason is not correct explanation of assertion.
- 3) Assertion is correct but reason is not correct.
- 4) Both are incorrect statement.

96. What is the causative agent of AIDS disease ?

- 1) DNA – adenovirus
- 2) Protein – prions
- 3) RNA – retrovirus
- 4) Glycoprotein – glyco virus

97. The basic fundemtnal characters present in chordata are given below.

- a) Presence of a tubular, dorsal, hollow nerve cord
- b) Presence of a solid, rod - like notochord
- c) Paired pharyngeal gills slits
- d) Absence of post anal tail

Find out **incorrect** statement

- 1) 'a' and 'b'
- 2) 'b' and 'c'
- 3) 'c' and 'd'
- 4) only 'd'

98. Match column – I with column – II

Column – I (Types of tissue)	Column – II (Example)
P) Squamous epithelium	i) Stomach
Q) Columnar epithelium	ii) PCT and DCT
R) Cuboidal epithelium	iii) Blood capillaries
S) Ciliated epithelium	iv) Trachea
1) P – i, Q – ii, R – iii, S – iv	2) P – iii, Q – i, R – ii, S – iv
3) P – iv, Q – ii, R – iii, S – i	4) P – ii, Q – iii, R – i, S – iv

99. Find out the **wrong** matching statement

- a) Energy giving food – Carbohydrate and fat
- b) Body bulding food – Protein and fat
- c) Protective food – Vitamins and minerals

- 1) 'a' and 'b'
- 2) 'b' and 'c'
- 3) 'a' and 'c'
- 4) 'b' only

100. The given symptoms related to which disease ?

- | | |
|---------------------------|----------------|
| i) Stunted growth | ii) Oedema |
| iii) Thin and curved legs | iv) Scaly skin |
| v) Bulging eyes | |

Code :

- | | |
|-------------|----------------|
| 1) Marasmus | 2) Goitre |
| 3) Rickets | 4) Kwashiorkor |

101. The correct combination of male reproductive system is

- 1) Tunica albugina, Epididymis, Prostate gland, Corpus leutum, Isthmus
- 2) Ampulla, Birtholian gland, Fundus, Vas difference, Cowper's gland, Ejaculatory duct
- 3) Seminal vesicle, Epididymis, Cowper's gland, Vas efferentia, Testis
- 4) Seminal vesicle, Ampulla, Isthmus, Labia majora, Clitoris

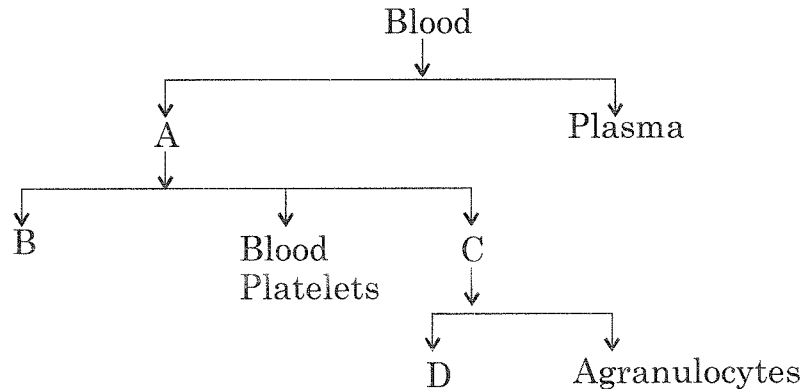
102. Major part of CO₂ transported in the form of

- 1) Dissolved as gas in water of plasma
- 2) Carbamino – haemoglobin
- 3) Bicarbonate ions dissolved in plasma
- 4) Combin with proteins present in plasma

103. Find out the correct combination related to the part of brain.

- | | Forebrain | Midbrain | Hindbrain |
|----|------------------|-----------------|------------------|
| 1) | Optic lobe | Diencephalon | Medulla |
| 2) | Cerebrum | Optic lobe | Cerebellum |
| 3) | Medulla | Diencephalon | Cerebellum |
| 4) | Cerebrum | Medulla | Optic lobe |

104. Select the correct meaning of symbols A to D in given chart of blood components.



- | | A | B | C | D |
|----|----------------|--------------|----------------|----------------|
| 1) | Granulocytes | WBC | RBC | Blood elements |
| 2) | Blood elements | RBC | WBC | Granulocytes |
| 3) | RBC | WBC | Blood elements | Granulocytes |
| 4) | WBC | Granulocytes | RBC | Blood elements |

105. Malpighian capsule is the association of
- 1) Bowman's capsule and proximal convoluted tubule
 - 2) Proximal convoluted tubules and distal convoluted tubule
 - 3) Bowman's capsule and loop of Henle's
 - 4) Bowman's capsule and Glomerulus
106. The **incorrect** statement about endocrine gland is
- 1) These are duct less gland
 - 2) These produces hormone, enzyme, mucus
 - 3) It transport their secretion through blood
 - 4) These abnormal secretion causes disease
107. The raising and care of silkworm for the production of raw silk is
- 1) Apiculture
 - 2) Sericulture
 - 3) Pisciculture
 - 4) Poultry farming
108. The important characterstic of social health is changes one's own behavior according to changing
- 1) digital world
 - 2) Environmental condition
 - 3) Social condition
 - 4) Technical condition
109. Dodo and passenger pigeons extinct due to
- 1) Air pollution
 - 2) Human exploitation
 - 3) Habitate loss
 - 4) Water pollution
110. Match the column-I with column-II

Column-I	Column-II
a) Animal no longer in existence	i) Wild life
b) Organisms in danger of becoming extinct	ii) Threatened
c) Organisms facing a serious but not immidate danger of extinction	iii) Extinct
d) Wild animal and plants that lives in thier natural habitate	iv) Endangered

- 1) a - i, b - ii, c - iii, d - iv
- 2) a - ii, b - iii, c - i, d - iv
- 3) a - iii, b - iv, c - ii, d - i
- 4) a - iv, b - ii, c - i, d - iii



IMPORTANT DATES

**Only For 10th CBSE, ICSE And Other Board Students
(Except Maharashtra State Board Students)**

SCREENING TEST - 2022 (OFFLINE MODE ONLY)	<u>20 March 2022</u>
Copy of candidate responses to be available on the website	23 Mar. 2022 (13:00 IST)
Online display of provisional answer key	23 Mar. 2022 (13:00 IST) (On Candidate Individual Login) / Website
Feedback and comments on provisional answer key from the candidates (Link given on website)	23 Mar. 2022 (13:00 IST) 24 Mar. 2022 (17:00 IST)
Online declaration of final answer key	25 Mar. 2022 (13:00 IST)
Result of SCREENING TEST 2022	25 Mar. 2022 (13:00 IST) (On Candidate Individual Login) / Website
Parent's Meet	27 Mar. 2022 (11:00 IST) (For Selected and Wait List Candidate)
Admissions : First List	28 Mar. 2022 (11:00 IST) 31 Mar. 2022 (17:00 IST)
Admissions : Second List	01 Apr. 2022 (11:00 IST) 04 Apr. 2022 (17:00 IST)