

SCSS-ST-23
PCB

Question Booklet Sr. No.

110831

Date : 02/04/2023

Time : 2.30 Hrs.

Marks : Section-A = 30 + Section-B = 320 = 350

Important Instructions :

1. Immediately fill the particulars on this page of the Test Booklet as well as Answersheet with Black or Blue Ball Pen. *Use of pencil is strictly prohibited.*
2. Do not open this Test Booklet until you are asked to do so.
3. This Test Booklet contains of **110** questions.
4. There are two sections in the question paper i.e. **Section-A** and **Section-B**.
5. The **Section-A** contains three parts i.e. *Part-I, Part-II* and *Part-III*.
6. The *Part-I* contains **10** questions of **English**.
7. The *Part-II* contains **10** questions of **Basic Mathematics**.
8. The *Part-III* contains **10** questions of **Mental Ability**.
9. In **Section-A**, each question carries **ONE** mark. There is **no negative** marking system.
10. The **Section-B** contains **THREE** parts i.e. *Part-I, Part-II* and *Part-III*.
11. The *Part-I* contains **40** questions of **Biology**.
12. The *Part-II* contains **20** questions of **Chemistry**.
13. The *Part-III* contains **20** questions of **Physics**.
14. In the **Section-B**, each question carries **4** marks. There is **negative** marking system. For each wrong answer **1 mark will be deducted from obtained marks**.
15. There are four choices for every question, out of which only one choice is most correct.
16. Filling up more than one responses in any question will be treated as wrong response and marks for this will be deducted according to negative system.
17. No candidates is allowed to carry any printed or written textual material, bits of papers, cell phone and any other electronic devices.
18. Rough work is to be done on the space provided in the Test Booklet only.
19. On completion of the test, the candidate must hand over the Answer Sheet to the Invigilator on duty. *However, candidates are allowed to take away this Question Paper with them.*
20. **Do not fold or make any stray marks on the Answer Sheet.**

Name of the Candidate (in Capital letters) : _____

Seat No : In figures

--	--	--	--	--	--	--	--

Section - A : (Part-I – English)

Instruction :

01. Find the word that conveys the same meaning.

RIVAL

- | | |
|--------------|-------------|
| 1) friend | 2) partner |
| 3) associate | 4) opponent |

Instruction :

02. Select the word that is opposite in meaning.

MOISTURE

- | | |
|-------------|-------------|
| 1) dryness | 2) delicate |
| 3) dampness | 4) defect |

Instruction :

03. Select from the answer choices given under the sentence to form grammatically correct sentence :

The drama had many scenes which were so humorous that it was hardly possible to keep a straight face.

- | | |
|----------------------------------|------------------------------|
| 1) hardly impossible to keep | 2) hardly impossible keeping |
| 3) hardly impossible for keeping | 4) no change |

Instruction :

04. Select the pair of words to replace the question mark.

Fuel : Pipes :: ? : ?

- | | |
|------------------|----------------------|
| 1) Blood : Veins | 2) Food : Stomach |
| 3) Wood : Trees | 4) Cars : Expressway |

Instruction :

05. Choose the one that can be substituted for the given phrase :

A person who does not believe in the existence of God

- | | |
|------------|------------|
| 1) theist | 2) heretic |
| 3) atheist | 4) fanatic |

Instruction :

06. Find out the correct meaning of the Idiomatic expression :

The students were *in the blues* when they heard that the examination would not be postponed after all

- | | |
|----------------------------|----------------------|
| 1) cheerless and depressed | 2) violent and angry |
| 3) wearing blue badges | 4) singing sad songs |

Instruction :

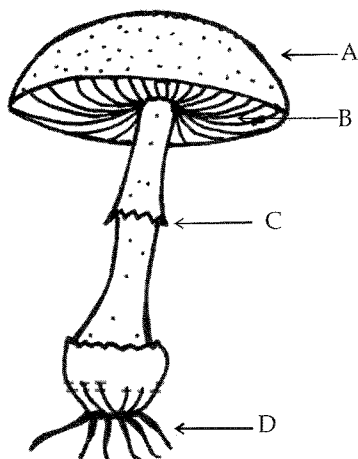
07. Choose the word that best completes the sentence.

Today, the Indian telecom network is the second largest in the world _____ China, which leads this sector.

- | | |
|------------|---------------|
| 1) beside | 2) preceeding |
| 3) earlier | 4) after |

Section - B : (Part-I – Biology)

31. Identify A, B, C and D from the given diagram ?



- 1) A-Annulus, B-Pileus, C-Cup, D-Stipe
- 2) A-Pileus, B-Gills, C-Annulus, D-Mycelial threads
- 3) A-Gills, B-Pileus, C-Annulus, D-Stipe
- 4) A-Stipe, B-Mycelial thread, C-Annulus, D-Cup

32. How many of the following members belongs to kingdom fungi ?

Penicillium, Agaricus, Paramoecium, Amoeba, Euglena, Nostoc, Anabaena, Rhizopus

- | | |
|------|------|
| 1) 4 | 2) 3 |
| 3) 5 | 4) 2 |

33. **Assertion :** Algae are mainly autotrophic

Reason : Alga is the association of fungi and cyanobacteria

- 1) Assertion and reason are true and reason is correct explanation of assertion
- 2) Assertion and reason are true but reason is not correct explanation of assertion
- 3) Assertion is true but reason is false
- 4) Both assertion and reason are false

34. Match the column-I with column-II and select the **correct** option.

Column-I	Column-II
A) Regeneration	i) <i>Spirogyra</i>
B) Budding	ii) <i>Plasmodium</i>
C) Fragmentation	iii) <i>Hydra</i>
D) Multiple fission	iv) <i>Planaria</i>
1) A-iv, B-iii, C-i, D-ii	2) A-iv, B-i, C-iii, D-ii
3) A-ii, B-i, C-iii, D-iv	4) A-ii, B-iii, C-i, D-iv

35. Match the column-I with column-II and select the **correct** option.

Column-I	Column-II
A) G ₂ phase	1. Gap 2 phase
B) Cytokinesis	2. Nuclear division
C) Karyokinesis	3. Cytoplasmic division

1) B-1, C-2, A-3

2) A-1, C-2, B-3

3) A-3, C-2, B-1

4) A-1, C-3, B-2

36. Which of the following statement is **incorrect** with respect to mitosis ?

1) In prophase, condensation of basically thin thread like chromosomes start

2) Nuclear membrane is completely disappears in metaphase

3) In anaphase, centromere does not split and thereby sister chromatids of each chromosome separate

4) In telophase, two daughter nuclei are formed in a cell

37. Select **odd** one out with respect to component of phloem :

1) Companion cells

2) Vessels

3) Sieve tube elements

4) Phloem fibres

38. Which of the following plant tissue helps aquatic plant leaves and stem to float ?

1) Companion cells

2) Chlorenchyma

3) Aerenchyma

4) Xylem parenchyma

39. Which of the following statements are **correct** about flowers ?

i) Flowers are always bisexual

ii) Flower is the main sexually reproductive structure in angiosperms

iii) Ovary after fertilisation develops into fruit

iv) Flowers may be unisexual

Options :

1) i and ii

2) i, ii and iii

3) ii, iii and iv

4) only iii and iv

40. Which of the following is/are **incorrect** statement/s ?

A) Sexual reproduction involves the fusion of gametes from two opposite sexes of same or different individuals of same species

B) Sexual reproduction always involves the fusion of gametes from two different individuals of same species

C) Embryogenesis is post fertilisation event

D) Gamete transfer is pre-fertilisation event

1) A and D

2) B and C

3) only B

4) only A

41. In Mendel classic experiments on pea plants, he did not use :

1) Flower position

2) Seed colour

3) Seed shape

4) Pod length

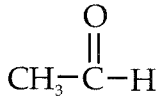
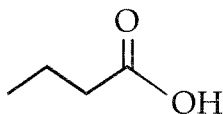
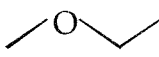

49. Which of the following statement is **incorrect** about ozone depletion ?
- 1) CFCs release 'Cl⁻' atom causes degradation of O₃
 - 2) Cl⁻ atoms act as catalyst
 - 3) Cl⁻ atom is not consumed in the reaction
 - 4) Ozone depletion is minimum over the Antarctica region
50. **Assertion** : Sanitary landfills are also not a good method for disposal of solid waste
Reason : These landfills causes pollution of underground water resources due to seepage of chemicals
- 1) Assertion and reason are true and reason is correct explanation of assertion
 - 2) Assertion and reason are true but reason is not correct explanation of assertion
 - 3) Assertion is true but reason is false
 - 4) Both assertion and reason are false
51. Find odd term out on the basis of classification from each group and select the correct option ?
- a) *Spirogyra, Mucor, Agaricus, Penicillium*
 - b) *Riccia, Marchantia, Moss, Cycas*
 - c) Frogs, Tortoise, Snakes, Crocodile
 - d) Cat, Rat, Rabbit, Parrot
- 1) *Spirogyra, Cycas, Frogs, Parrot* 2) *Mucor, Riccia, Tortoise, Rabbit*
 - 3) *Spirogyra, Cycas, Tortoise, Parrot* 4) *Mucor, Cycas, Frogs, Parrot*
52. Every living thing appears to be different from others with respect to appearance and mode of life and maintains its 'own identity'. This phenomenon is known as
- 1) Classification 2) Hierarchy
 - 3) Environmental conservation 4) Biodiversity
53. How many of the following statements are true ?
- i) Oxidation of food takes place in mitochondria
 - ii) All plastids have pigments
 - iii) Cellulose is a protein
 - iv) Blue green algae are prokaryotes
 - v) The cell wall is freely permeable
- 1) One 2) Two
 - 3) Three 4) Four
54. Match the following and select correct option.

Column-I	Column-II
A) Zacharias Jansen	i) Named protoplasm to the fluid in cell
B) Robert Hooke	ii) First observed living cell
C) Leeuwenhoek	iii) Discovered dead cell
D) Johannes Purkinje	iv) First invented microscope
1) A-iv, B-i, C-ii, D-iii	2) A-iii, B-i, C-iv, D-ii
3) A-iv, B-iii, C-ii, D-i	4) A-ii, B-iii, C-iv, D-i

62. Choose the correct sequence of movement of sperms in male reproductive system
- 1) Vas efferens – rete testes – vas deferens – epididymis – urinogenital duct– ejaculatory duct
 - 2) Rete testes –vas efferens–epididymis–vas deferens–ejaculatory duct–urinogenital duct
 - 3) Vas deferens – rete testes – vas efferens – epididymis – urinogenital duct– ejaculatory duct
 - 4) Rete testes – vas deferens – vas efferens –ejaculatory duct – epididymis – ejaculatory duct – urinogenital duct
63. The given symptoms related to sexually transmitted disease
- Chancre on genitals, Alopecia, Rash, Inflammation of Joints , Fever*
- 1) Syphilis
 - 2) Gonorrhoea
 - 3) AIDS
 - 4) Both 1 and 2
64. Which of the following technique from animal husbandry is helpful in pollination and to increase the crop yield ?
- 1) Poultry
 - 2) Sericulture
 - 3) Lac culture
 - 4) Apiculture
65. Note the relationship between the first two words and suggest suitable words in the fourth place
- a. HIV : AIDS :: HB :
 - b. Typhoid : Salmonella typhi :: Tuberculosis :
 - c. Pulse polio : Poliomyelitis :: DOTs :
 - d. TB : Communicable :: Cancer :
- 1) TB, M. Tuberculi, Hepatitis, Noncommunicable
 - 2) Hepatitis, M. Tuberculi, TB, Noncommunicable
 - 3) Hepatitis, TB, M. Tuberculi, Noncommunicable
 - 4) Noncommunicable, TB, Hepatitis, M. Tuberculi
66. Alcohol consumption mainly affects
- 1) Excretory system
 - 2) Respiratory system
 - 3) Digestive system
 - 4) Nervous system
67. Development of which bones in apes started to stand in erect posture and gave rise to evolution of human-like animal ?
- 1) Lumbar bones
 - 2) Sacral bones
 - 3) Thoracic bones
 - 4) Cervical bones
68. Evolution means
- 1) Mutation
 - 2) Translocation
 - 3) Transcription
 - 4) Gradual development
69. Which of the following is world's largest organisation engaged in environmental activities ?
- 1) Chipko centre
 - 2) World wildlife fund
 - 3) Green peace
 - 4) Gandhi peace foundation
70. Green pages of 'Red list' book of IUCN contain the names of
- 1) Endangered species
 - 2) Previously endangered but presently safe species
 - 3) Vulnerable species
 - 4) Indeterminate species

79. Red ink is prepared from
- 1) Phenol
 - 2) Aniline
 - 3) Congo red
 - 4) Eosin
80. Which of the following is limestone ?
- 1) CaO
 - 2) CaCO₃
 - 3) Ca(OH)₂
 - 4) NaOH + CaO
81. Froth flotation process is used to concentrate
- 1) Sulphide containing ore due to hydrophobic property
 - 2) Sulphide containing ore due to hydrophilic property
 - 3) Oxide containing ore due to hydrophobic property
 - 4) Oxide containing ore due to hydrophilic property
82. Which of the following is the correct order of the atomic radii of the elements oxygen, fluorine and nitrogen ?
- 1) O < F < N
 - 2) N < F < O
 - 3) O < N < F
 - 4) F < O < N
83. At a constant pressure 'P', the plot of volume (V) as a function of temperature (T) for 2 moles of an ideal gas gives a straight line with a slope 0.328 LK⁻¹. The value of P (in atm) is closest to [gas constant R = 0.0821 L atm mol⁻¹ k⁻¹]
- 1) 0.25
 - 2) 0.5
 - 3) 1.0
 - 4) 2.0
84. At constant temperature, the pressure of 'x' dm³ of a gas was increased from 75 kPa to 150 kPa. The new volume will be
- 1) x
 - 2) 2x
 - 3) x²
 - 4) x/2
85. To get 32 g of calcium oxide, the mass of calcium carbonate to be heated strongly is
- 1) 56.1 g
 - 2) 44 g
 - 3) 100 g
 - 4) 57.14 g
86. The number of oxygen atoms in 8 g of O₂ molecules
- 1) 1.51 × 10²³
 - 2) 6.022 × 10²³
 - 3) 2 × 10²³
 - 4) 3.011 × 10²³
87. A dilute solution of ethanoic acid in water is called
- 1) Spirit
 - 2) Denatured alcohol
 - 3) Aldehyde
 - 4) Vinegar
88. **Assertion :** Alcohol have similar chemical properties.
Reason : All alcohols contains similar hydroxy (-OH) functional group.
- 1) Both assertion and reason are correct and reason is correct explanation of assertion
 - 2) Both assertion and reason are correct and reason is not correct explanation of assertion
 - 3) Assertion is correct but reason is incorrect
 - 4) Assertion is incorrect but reason is correct

89. Match the following.

Column-I (Compound)	Column-II (IUPAC name)
A) 	i) Butanoic acid
B) 	ii) Ethanal
C) 	iii) Methoxy ethane
D) 	iv) 3-Methyl pent-2-ene

1) A-ii, B-i, C-iii, D-iv

2) A-iii, B-ii, C-i, D-iv

3) A-i, B-ii, C-iii, D-iv

4) A-ii, B-iii, C-i, D-iv

90. The substance not responsible for the hardness of water is

1) Sodium nitrate

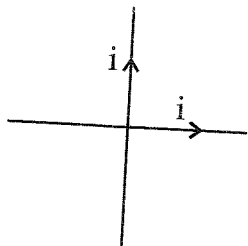
2) Calcium hydrogen carbonate

3) Calcium carbonate

4) Magnesium carbonate

Space for Rough Work

106. Equal currents i flow in two wires along x and y -axis as shown. Match the following.



Column-I	Column-II
A) Magnetic field in first quadrant	p) Inwards
B) Magnetic field in second quadrant	q) Outwards
C) Magnetic field in third quadrant	r) May be inwards or outwards
D) Magnetic field in fourth quadrant	

Options :

- 1) A-p, B-q, C-p, D-r
 2) A-q, B-r, C-q, D-p
 3) A-r, B-q, C-r, D-p
 4) A-r, B-p, C-r, D-q

107. At what temperature will its value be same in celsius and in fahrenheit ?

- 1) 40°
 2) -40°
 3) 32°
 4) 0°

108. Light passes from a medium A to another medium B without bending at the interface. Which of the following is not possible ?

- 1) A and B have the same refractive index and light falls on the interface obliquely
 2) A and B have the same refractive index and light falls on the interface perpendicularly
 3) A and B have different refractive indices and light falls normally on the interface
 4) A and B have different refractive indices and light falls obliquely on the interface

109. In nearsightedness, the image of a distant object forms

- 1) In front of the retina
 2) On the retina
 3) Beyond the retina
 4) Any where

110. What is the minimum distance between an object and its real image formed by a convex lens of focal length ' f ' ?

- 1) zero
 2) $2f$
 3) $3f$
 4) $4f$



IMPORTANT DATES

SCREENING TEST (Shahu) - 2023 (OFFLINE MODE ONLY)	<u>02 Apr. 2023</u>
Online display of provisional answer keys	02 Apr. 2023 : 06 PM
Last Date Feedback and comments on Provisional Answer Keys from Candidates	04 Apr. 2023 : 06 PM
Online declaration of final answer keys	05 Apr. 2023 : 06 PM
Copy of candidate responses to be available on the website	07 Apr. 2023 After 02 PM
Result of SCREENING TEST 2022 (Individual Login)	07 Apr. 2023 After 02 PM
Parent's Meet (PCM GROUP)	09 Apr. 2023 at 02-30 PM
Parent's Meet (PCB GROUP)	09 Apr. 2023 at 11-00 AM
Admissions : First List	09 Apr. 2023 to 13 Apr. 2023 UPTO 06 PM
Admissions : Second List	15 Apr. 2023 to 18 Apr. 2023 UPTO 06 PM

वरील तारखांमध्ये काही बदल होऊ शकतो विद्यार्थी आणि पालकांनी अधिक माहितीसाठी वेबसाईट पाहणे.